

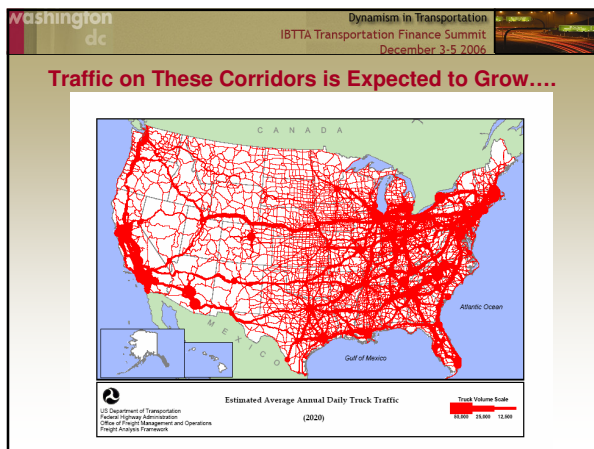
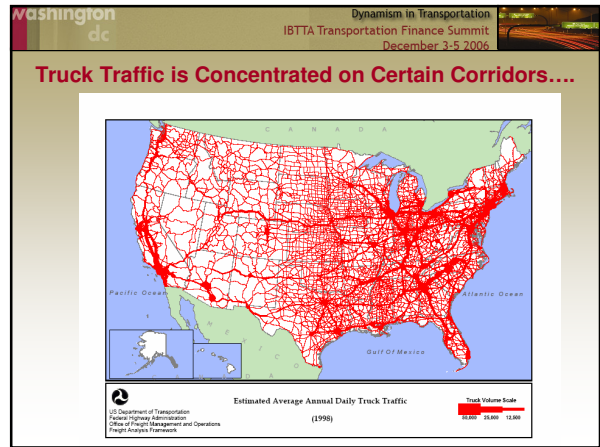
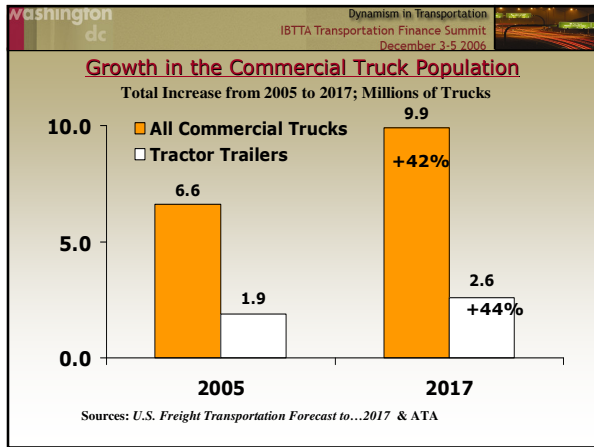
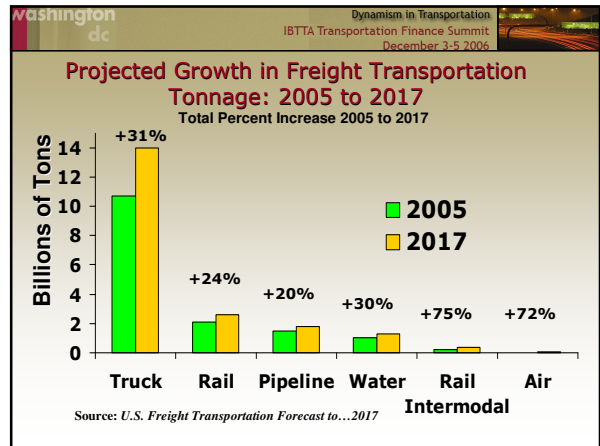
washington dc Dynamism in Transportation
 IBTTA Transportation Finance Summit
 December 3-5 2006

IBTTA
 International Bridge, Tunnel and Turnpike Association

ATA
 AMERICAN TRUCKING ASSOCIATIONS

U.S. Trucking Industry Perspective on Truck Lanes

Darrin Roth
 Director of Highway Operations
 American Trucking Associations
 December 5, 2006



washington dc Dynamism in Transportation
IBTTA Transportation Finance Summit
December 3-5 2006

Positive Aspects of Truck Lanes

- **Separates cars and trucks**
 - Eliminates operational differences that create conflicts
 - Safer working environment: three-quarters of car-truck crashes begin with the actions of the car driver
- **Productivity improvements**
 - Less congestion
 - Better reliability
 - Changes in size and weight
- **Tailored highway design**

washington dc Dynamism in Transportation
IBTTA Transportation Finance Summit
December 3-5 2006

Negative Aspects of Truck Lanes

- **Potential for reduced access if mandatory**
 - Shifts traffic to surface streets
 - Increases transportation costs for some businesses
- **May not be the right solution**

washington dc Dynamism in Transportation
IBTTA Transportation Finance Summit
December 3-5 2006

Financing

- **Truck lanes don't necessarily have to be toll financed**
- **Trucking industry prefers highway funding through traditional methods, i.e. federal and state fuel taxes, registration fees**

washington dc Dynamism in Transportation
IBTTA Transportation Finance Summit
December 3-5 2006

Toll Financing

- **If tolls are used:**
 - Use of the toll road must be voluntary
 - Tolls on new lanes only...no tolls on existing Interstate lanes
 - All revenues go to the project
- **Highway user groups are united in their opposition to tolls on existing Interstates**

washington dc Dynamism in Transportation
IBTTA Transportation Finance Summit
December 3-5 2006

Illustrative Scenarios

- **Star Solutions – I-81 Virginia**
- **Trans-Texas Corridor**
- **Atlanta**

washington dc Dynamism in Transportation
IBTTA Transportation Finance Summit
December 3-5 2006

If You Build it Will They Come?

- **Congestion relief, but time is not always a critical factor**
- **Productivity improvements – critical to some carriers, inconsequential to others**
- **Length of route and termination points are important**
- **Tolls are inherently a disincentive to using a truck lane**