

Reinventing the New Jersey Turnpike's Maintenance Facilities

**Maintenance District Upgrades
on the Garden State Parkway
and New Jersey Turnpike**



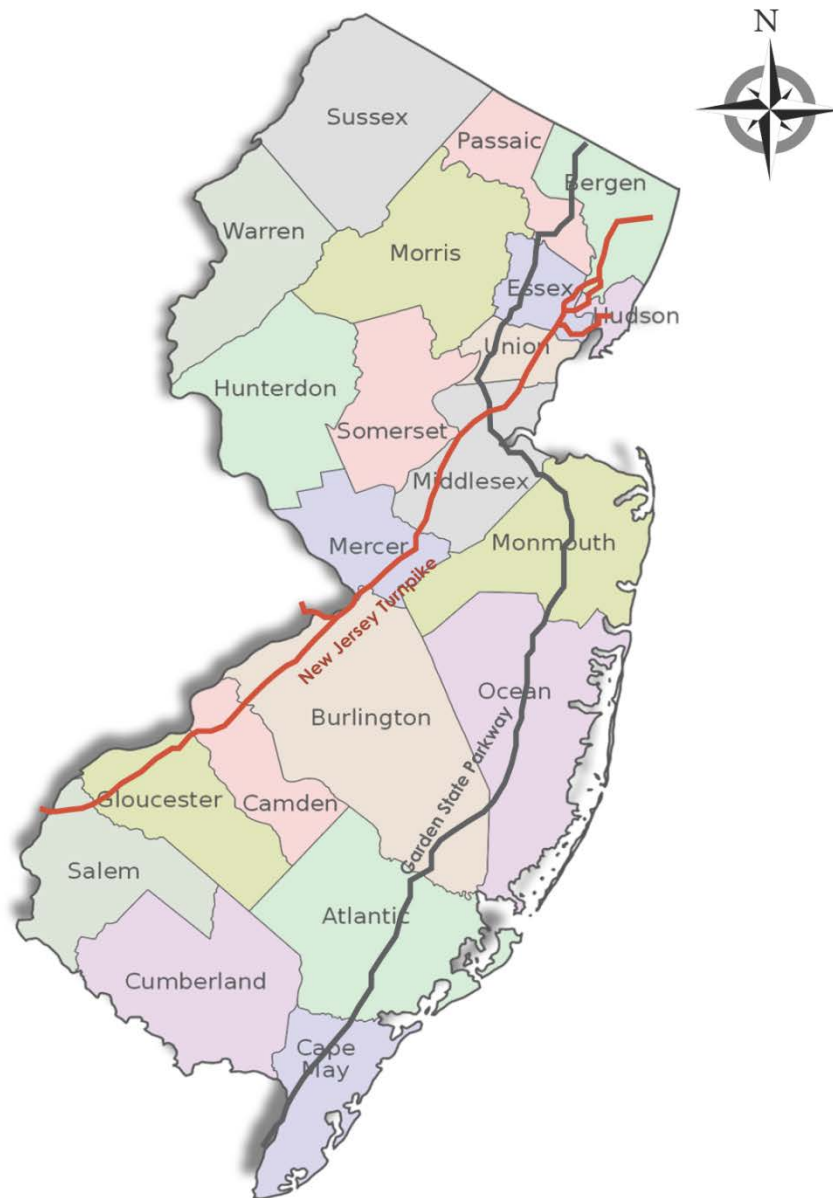
June 1, 2015

Presented by:

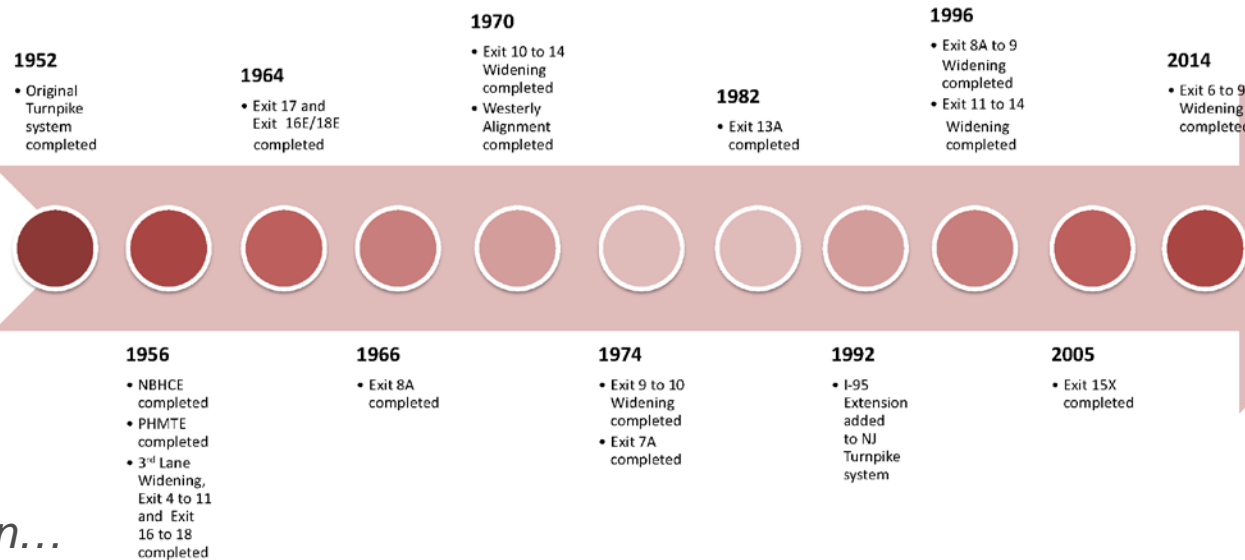
**Robert Fischer, P.E.
Chief Engineer**

**New Jersey Turnpike Authority
Woodbridge, NJ**

New Jersey Turnpike and Garden State Parkway System



NJ Turnpike – Timeline of Growth



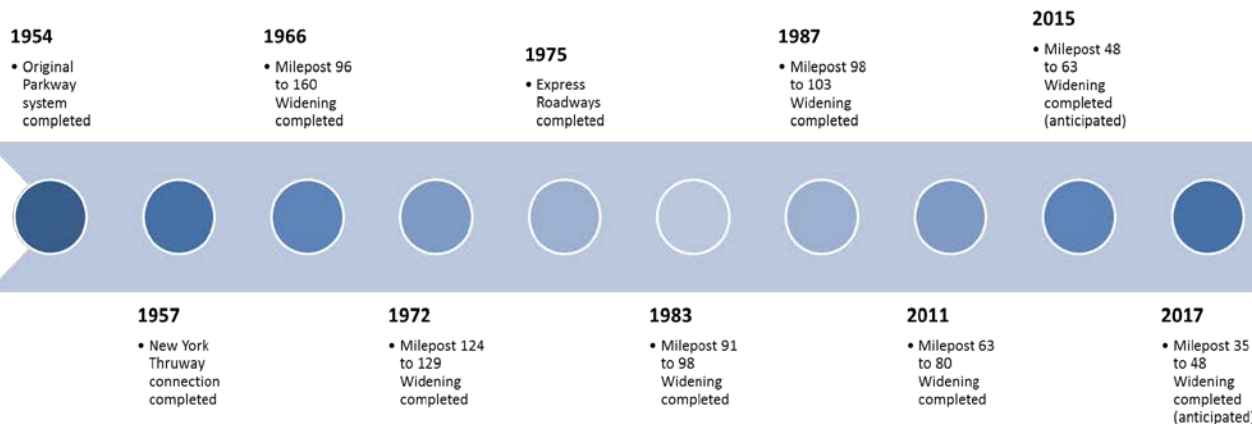
Then...



...Now



Garden State Parkway – Timeline of Growth



163 total miles
652 lane miles

193 total miles
Over 1,200 lane miles

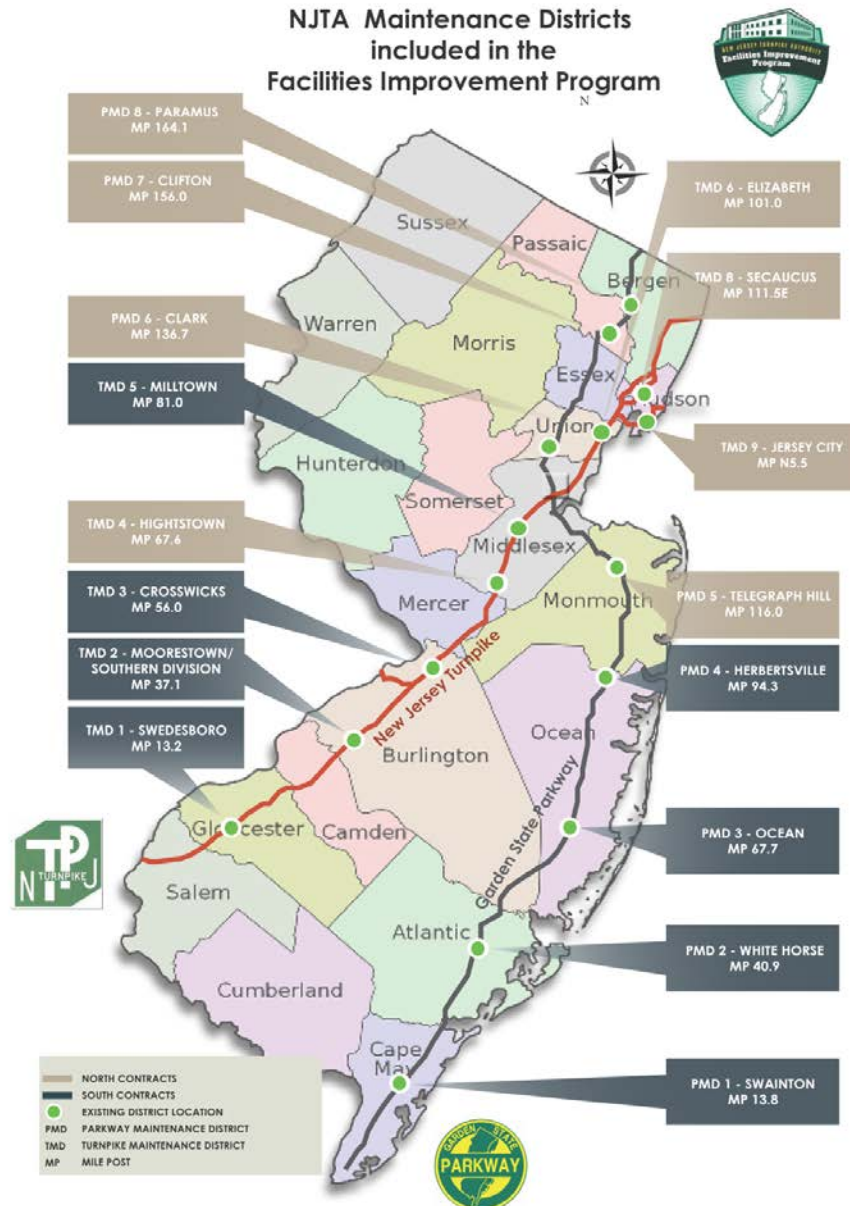
Then...

...Now



Facilities Improvement Program – Maintenance District Scope of Work

- Replace and / or Rehabilitate Multi-Use Buildings
- Repair or Replace Salt Domes with Salt Sheds
- Sitework Improvements
- Bring facilities to a state of good repair and extend useful life of facilities over the next 50 years
- The Facilities Improvement Program is part of the Authority's overall **\$7 billion** Capital Improvements Program.

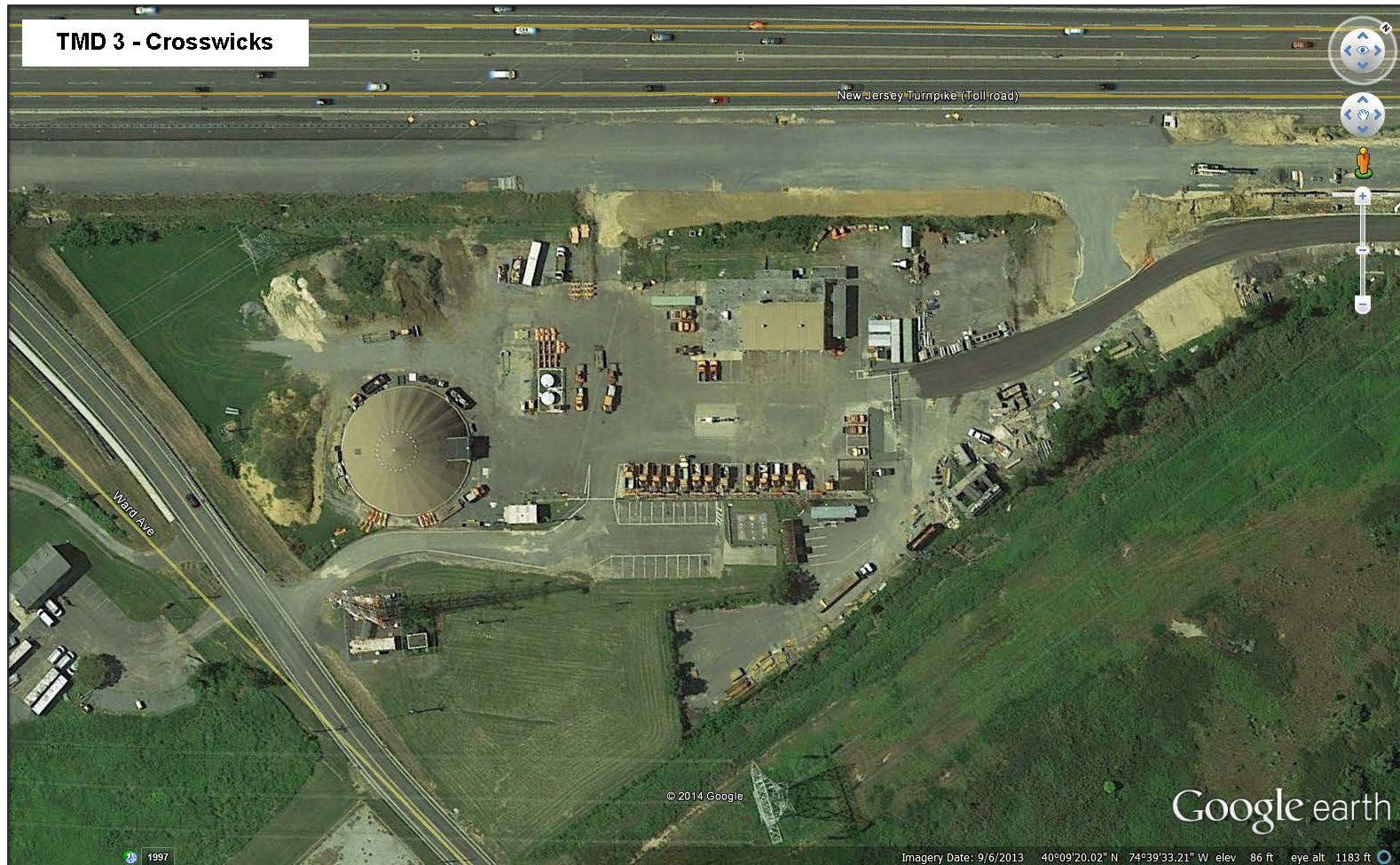


Schedule for Upcoming Contracts

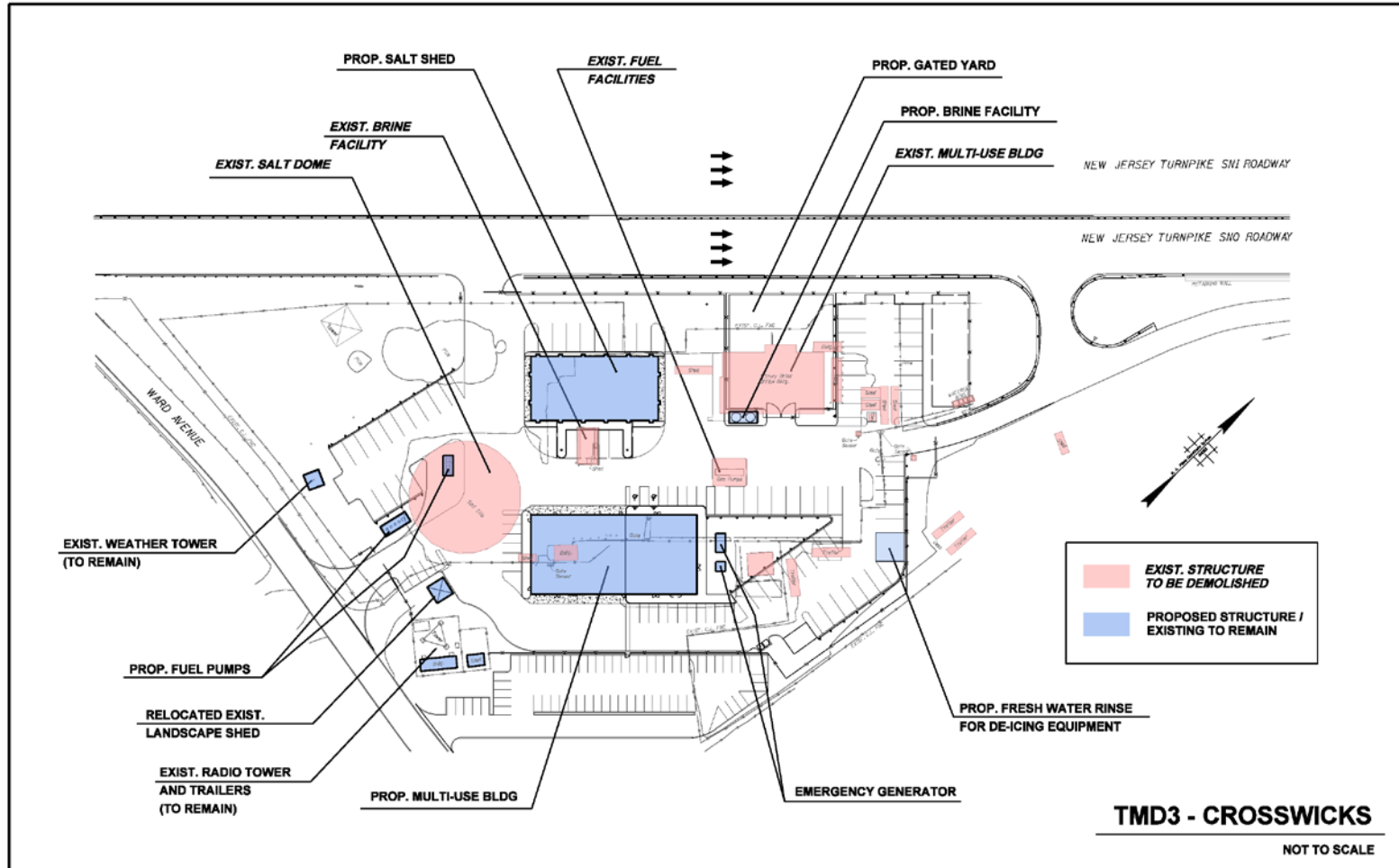
- Maintenance Districts (12 to 15 months per site, 20 to 24 months per contract)

Maintenance Districts	2012				2013				2014				2015				2016				2017			
	Q 1	Q 2	Q 3	Q 4	Q 1	Q 2	Q 3	Q 4	Q 1	Q 2	Q 3	Q 4	Q 1	Q 2	Q 3	Q 4	Q 1	Q 2	Q 3	Q 4	Q 1	Q 2	Q 3	Q 4
Master Planning/Programming																								
Design																								
Construction																								

Turnpike Maintenance District 3 (Crosswicks) – Existing Site



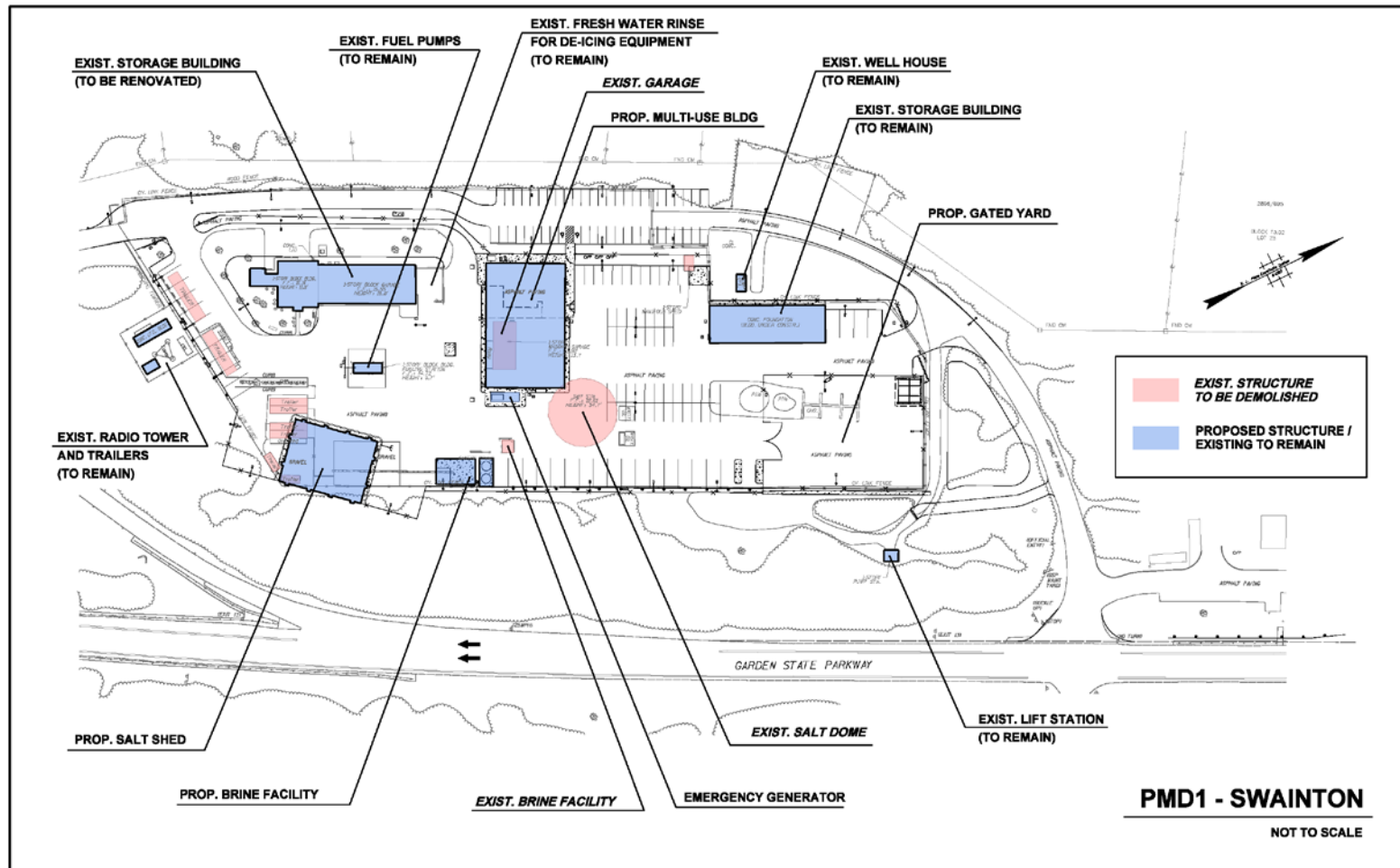
Turnpike Maintenance District 3 (Crosswicks) - Proposed Site Improvements



Parkway Maintenance District 1 (Swainton) – Existing Site



Parkway Maintenance District 1 (Swainton) - Proposed Site Improvements



Existing Multi-Use Buildings



Existing Multi-Use Buildings



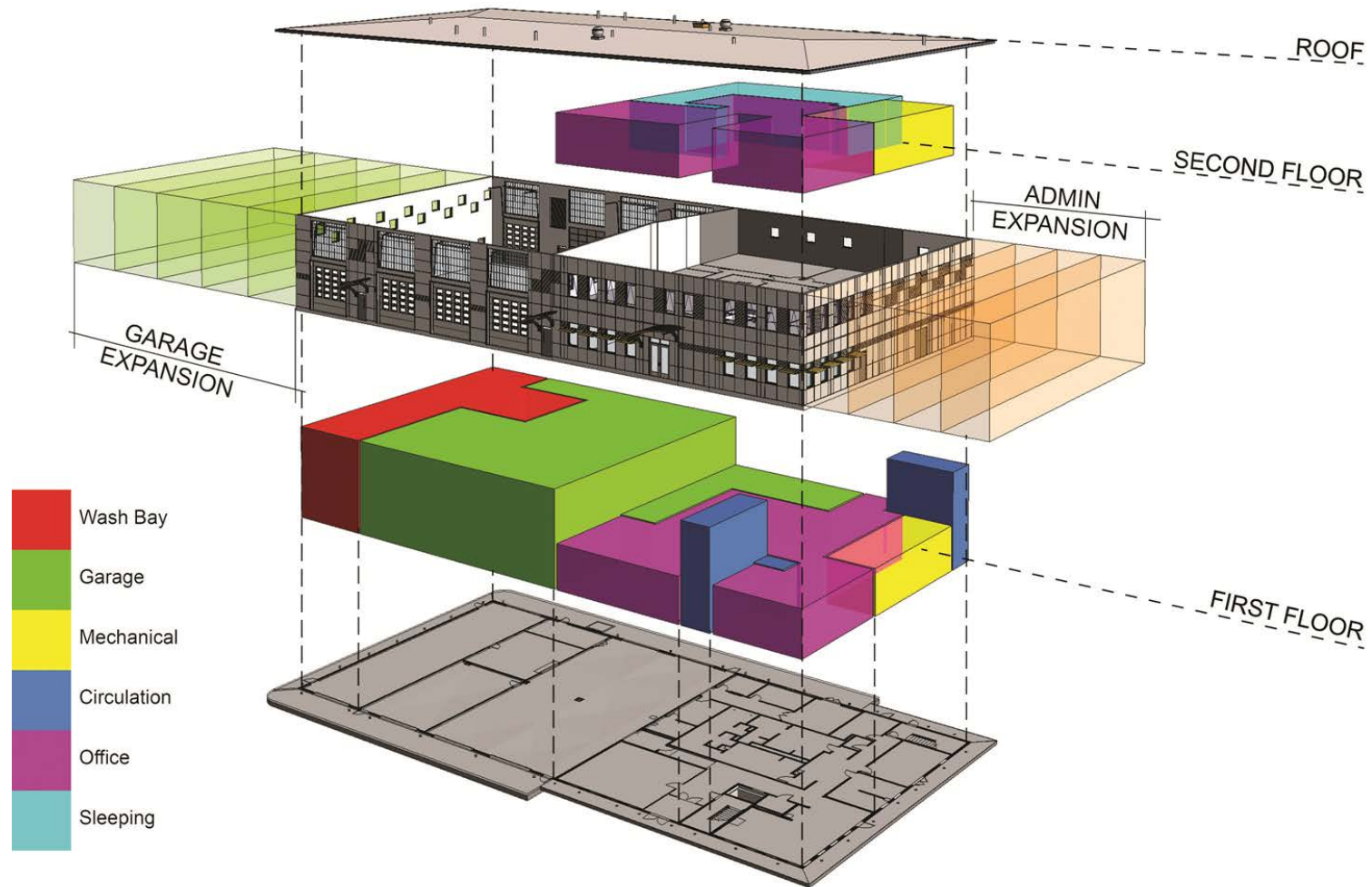
Existing Multi-Use Buildings



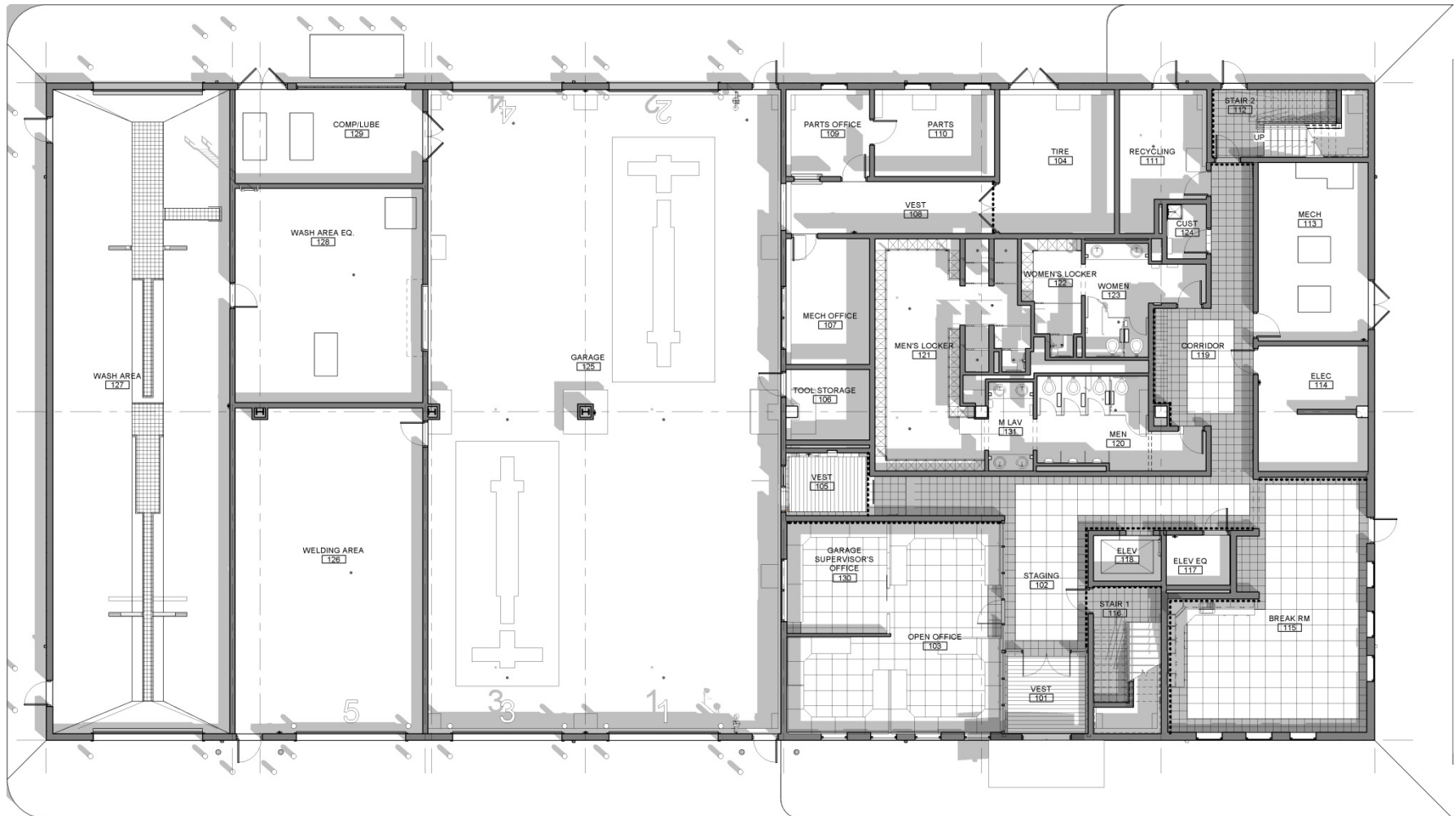
Multi-Use Building – Conceptual Prototype



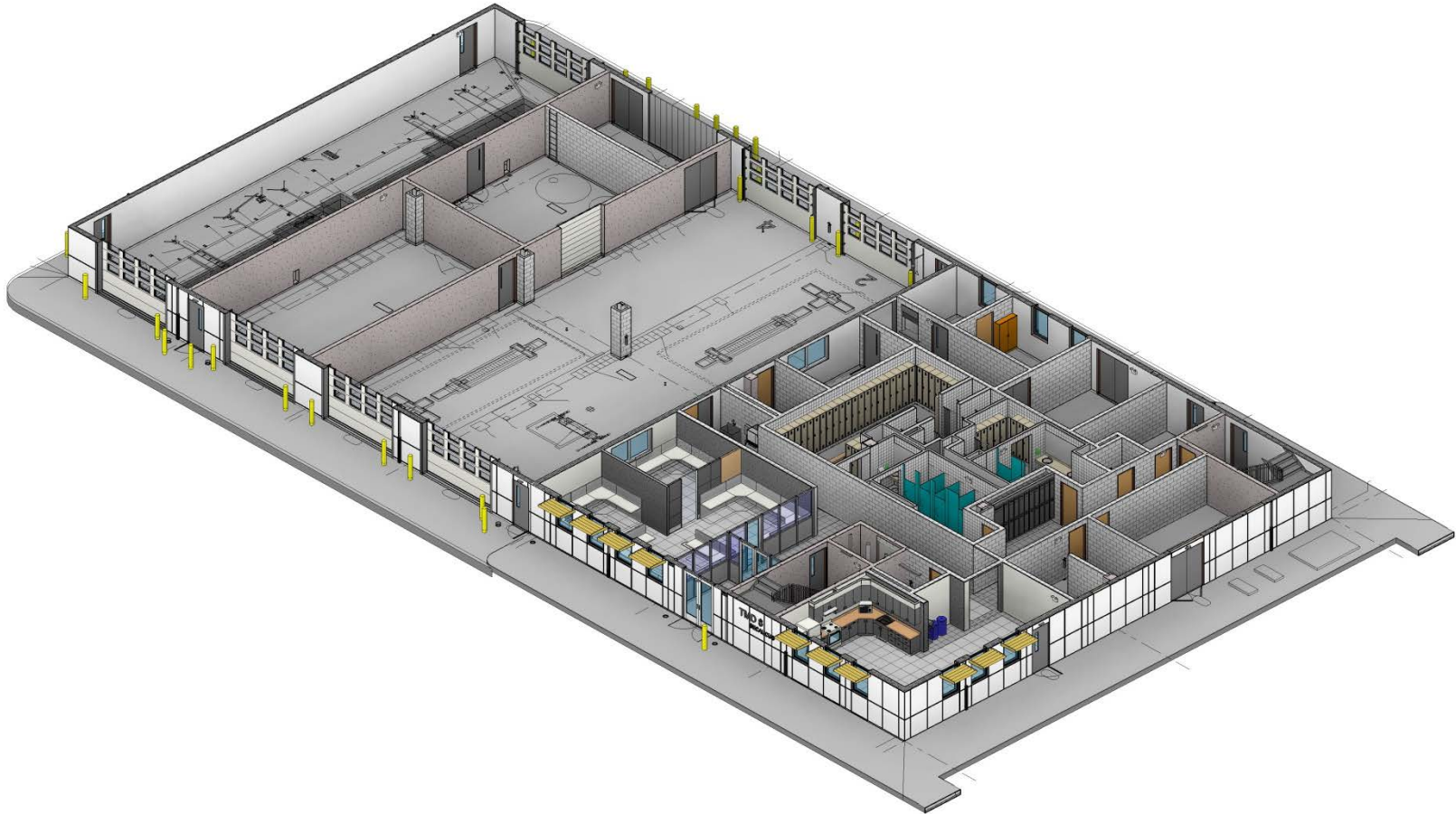
Multi-Use Building – Conceptual Prototype



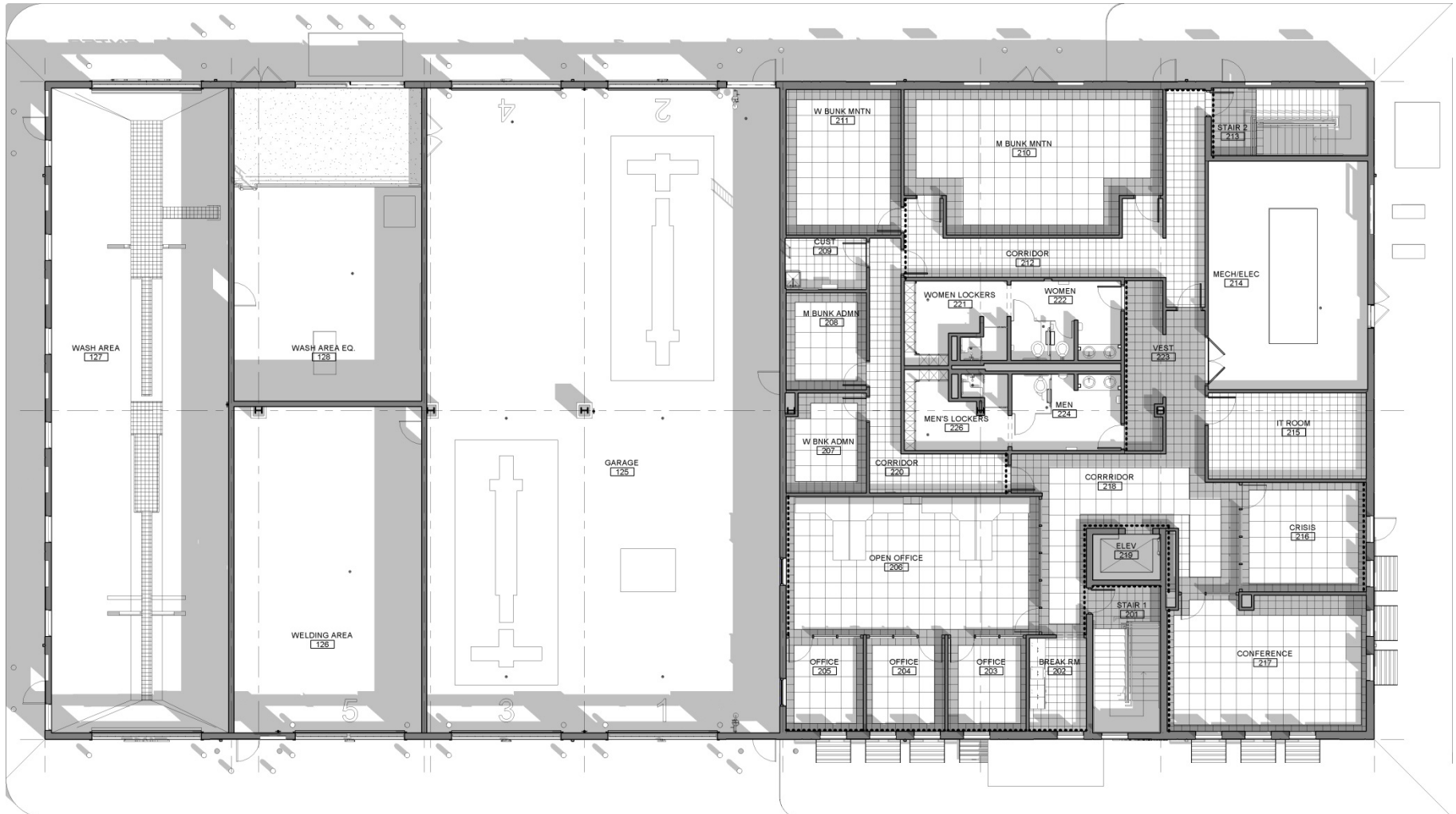
Multi-Use Building – First Floor Plan



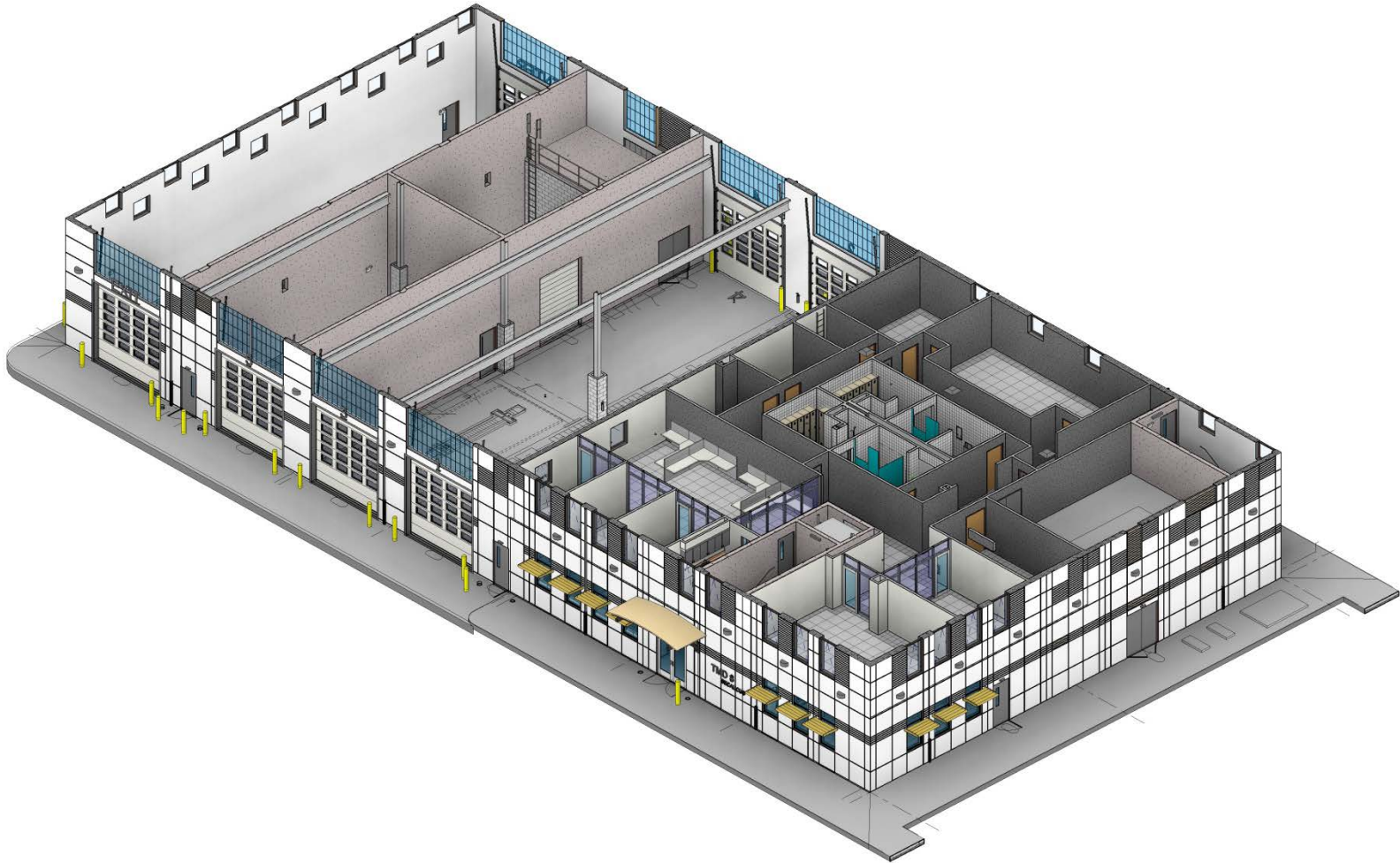
Multi-Use Building – First Floor Rendering



Multi-Use Building – Second Floor Plan



Multi-Use Building – Second Floor Rendering



New Multi-Use Building under construction

- Building Exterior (TMD8 – Secaucus)



New Multi-Use Building under construction

Metal Roof Decking Installation (TMD8 – Secaucus)



Wash Bay Pits Installation (TMD8 – Secaucus)



Multi-Use Building – Precast Concrete Panels



Wash Bays



Existing Salt Domes



Existing Salt Domes



New Salt Shed Design

- Rectangular design replaces previous dome units
- Increased salt storage capacity
- Improved stacking and loading operations
- Exterior vehicle canopies to protect and extend equipment life



SUMMARY

- Lane miles increased from original construction of 1200 lane miles to 2500 lane miles today.
- The age of the Maintenance Facilities is over 60 years without any appreciable renovation.
- Time has come to replace the aging obsolete Maintenance Facilities with modern efficient durable structures to meet the demands of the next 50 years.

Reinventing the New Jersey Turnpike's Maintenance Facilities

**Maintenance District Upgrades
on the Garden State Parkway
and New Jersey Turnpike**



June 1, 2015

Presented by:

**Robert Fischer, P.E.
Chief Engineer**

**New Jersey Turnpike Authority
Woodbridge, NJ**