



TOLLWAYS

INTERNATIONAL BRIDGE, TUNNEL AND TURNPIKE ASSOCIATION, INC.

SUITE 307

1225 CONNECTICUT AVENUE, N. W.

WASHINGTON, D. C. 20036

September, 1968

RECORD TURNOUT EXPECTED FOR CHICAGO MEETING



Wolf



Bonniwell



Webber



Mitchell

Spanish Toll Facility Is Off to Fast Start

The first vigorous year of life for Autopistas, Concesionaria Espanola, S. A., the organization which will build, operate and maintain the tollroad system in Spain, has been written in a full-color Annual Report received recently at IBTTA headquarters. Autopistas is an IBTTA member.

The report quotes Jose Ferrer Bonsoms, board chairman, that the organization's history is "recent and compact," having been incorporated on February 24, 1967, under contract to the Spanish government on April 20, and starting construction of the Catalanian toll road on July 28, with nearly 3 billion pesetas (\$42 million) worth of work under contract. First section, the Mongat-Mataro leg, is to be open to traffic by October 1969, with about 102 miles completed from Barcelona to La Junquera by late 1972. Another 60-mile route from Molins de Rei to Salou will start construction next April with completion by late 1971. The roads will stimulate a billion dollars worth of development along the route within ten years.

Traffic Flow Sensors Studied by DOT

DOT's Federal Highway Administration has let a research contract to Texas Instruments, Inc., of Dallas aimed at developing better traffic sensors to gather traffic flow data. New traffic control systems under development depend on these sensors for efficient operation, but there have been little significant improvements in detection devices in 15 years, according to Frank Turner, Director of Public Roads.

When IBTTA President W. Grant Mitchell bangs his gavel to open the 36th Annual Meeting of the Association late this month in Chicago, he may be looking at the largest crowd ever to attend an IBTTA convention. Room reservations are reported moving at a phenomenal pace, the Palmer House advises, and advance registrations are also accumulating at Washington headquarters.

The big attraction appears to be the up-to-the-minute program, the bright lights of mid-America and cosmopolitan Chicago, and the promised future for the toll philosophy in tomorrow's highway panorama.

One of the main points of interest is the Wednesday morning panel on "Toll Facilities and Modern Highway Needs" which will feature John O. Morton, President of the American Association of State Highway Officials, Donald R. Bonniwell, of the Illinois State Toll Highway Commission, and James Webber, Manager of Statistics, Prices & Costs for Engineering News-Record. D. Louis Tonti, of the Garden State Parkway and past IBTTA president, will moderate this discussion.

Webber is an able substitute for the previously announced panelist from that magazine, Senior Editor Leo J. "Jack" Ritter, who passed away suddenly last month while vacationing in Colorado.

IBTTA also announced the selection of Robert A. Wolf, of Cornell Aeronautical Research Laboratory, Buffalo, N. Y., as keynote speaker on Monday morning, September 30. Wolf is head of the Transportation Research Department, and will discuss some of the far-out but practical ideas being worked on for tomorrow's highway transportation.

Other timely panel sessions now have been fully fleshed out with participants and their value to meeting-goers can be anticipated. On Monday afternoon, for exam-

(continued on page 3)

Penn Turnpike Advises Puerto Rican Road Men

The Pennsylvania Turnpike Commission has been working with the Puerto Rico Highway Authority and encouraging its plans to build a turnpike in that Caribbean commonwealth.

First, Franklin V. Summers, Director of Operations and IBTTA second vice president, visited Puerto Rico, along with Harry L. Lundy, providing detailed information to help their island counterparts anticipate problems they might encounter in building their road, scheduled for completion in 1972.

Subsequently four Puerto Rican officials returned the visit, conferring with other Penn Turnpike staff members and touring the Turnpike and Garden State Parkway.



Standing from left: Joseph R. Ciabocchi, Comptroller, Penn Turnpike; Hector Jimenez, PRHA; Angel L. Allende, Director of Design, PRHA; seated, Roberto L. Torres, PRHA Director of Construction; Gilberto L. Torres, Asst. Exec. Dir., PRHA; and Franklin V. Summers, Director of Operations, Penn Turnpike Commission.

Tire Disablement Reports Offered

Four final research reports on the tire disablement study conducted by Northwestern University's Traffic Institute with the cooperation of the Illinois Tollway, are now available on request from the Institute, located at 1804 Hinman Avenue, Evanston, Illinois 60204.

The four reports, previously announced in Tollways, cover results of a study of tire disablements and accidents on high-speed roads. They cover frequency of tire disablements; use and condition of tires, disablements followed by accidents and those not followed by accidents.

McDonough Advances in Chicago

James J. McDonough, Co-chairman of IBTTA's 36th Annual Meeting this month in Chicago, Illinois, has been promoted to Commissioner of Streets and Sanitation in that city.

Among Mr. McDonough's responsibilities are supervision of the Chicago Skyway, a toll facility which convention-goers may see during their tour of the Windy City on Tuesday, October 1.

Rock Island Bridge Featured In Local News Supplement

The importance of the Rock Island Centennial Bridge across the Mississippi to the local communities on either side was emphasized in a four-page Sunday supplement spread in the Rock Island Argus Roundup.

The feature story opened with a rotocolor photo on the supplement's cover page, showing the bridge and Superintendent Morris E. Muhleman. Eight additional photos accompanied the text, which told of the complete mechanization of toll collection and the innovations for efficiency devised by Muhleman and his staff.

Garden State Parkway Builds Beach Business

A six-page cover story entitled "Parkway to Progress" has been published in the Newark News Magazine, Sunday supplement to that newspaper, on August 4. The spread, illustrated with color photos, notes that the Garden State Parkway has brought new life to the Jersey seashore, opening up southern resort areas of the State, and stimulating relocation of industries along its right of way.

The article also mentions the availability of the Cape May-Lewes Ferry at the southernmost end of the Parkway to accommodate thru travelers along the East Coast.

Delaware Bay Ferries Increase Schedules

Business continued to boom for the Cape May-Lewes Ferry, operated by the Delaware River and Bay Authority. Late summer demand led officials to provide all the extra sailings needed, some on just a few minutes' notice.

General manager Ted Bright made this promise to motorists: Show up any time between our first and last regularly scheduled sailings each day and we will get you across Delaware Bay without delay, for the balance of the summer. A new one-day record of 1,905 vehicles and 7,032 passengers was set on August 17.

New York, Pennsylvania Roads Begin Rebuilding Programs

Major rebuilding work is under way on both the New York Thruway and the Pennsylvania Turnpike.

This summer, contracts were let to rebuild the Harrisburg-East interchange to connect with a new state highway and the huge Penn-Harris cloverleaf, according to Lester F. Burlein, Turnpike Commission chairman.

Reconstruction of the southerly four miles of the New England Thruway has begun, with shifts of thru traffic to detour locations carefully planned to cut down inconvenience to local communities. Two-stage construction using local streets as detours will actually save construction time, now estimated at four and a half months. Other methods would have taken up to two years to complete.

Kansas Completes Resurfacing Job

The 1968 re-surfacing program of the Kansas Turnpike was completed two weeks before the final summer rush and well ahead of schedule, L. W. Newcomer, chief engineer-manager, announced.

The projects included 68 2-lane miles of hot mix heavy overlay and 160 2-lane miles of asphalt sealant and pre-coated chips. The 236-mile Turnpike has now been virtually re-surfaced its entire length in the past two years.

The U. S. will just miss having a hundred million cars on the road this year. DOT estimates 99.958 million vehicles registered in 1968, up 3 million from '67.

Annual Meeting (continued)

ple, "Handling Emergency and Special Traffic Situations" will have this line-up: E. R. Foley, California Division of Bay Toll Crossings, moderating; panelists — William F. Bender, Maryland State Roads Commission; James J. Bray, Triborough Bridge and Tunnel Authority; Robert L. Betz, Illinois State Toll Highway Commission; and E. W. Davis, Richmond-Petersburg Turnpike Authority.

A Tuesday morning session on "Improving Your Roadway Signing Program" will be led by Samuel D. Draper as chairman, with participants James N. McDonald, of the U. S. Bureau of Public Roads' Office of Traffic Operations; William R. Johnson, Delaware River Joint Toll Bridge Commission; Arnold G. Fisch, New York State Thruway Authority; and Jean G. Major, Quebec Autoroutes Authority. McDonald will show some actual films of sign-confused motorists taken on U. S. freeways.

The problems of expanding to meet public demand will be covered by a panel headed by Edward J. Rosewell, Illinois State Toll Highway Commission and consisting of Oliver J. Compton, Jr., New Jersey Turnpike Authority; C. C. Nichols, Washington Toll Bridge Authority; Richard F. McGreal, Chicago Skyway Toll Bridge; and Harold W. Stayman, Florida State Turnpike Authority.

— Registration Opens Sunday —

Actual events get under way with registration opening at noon Sunday on the Sixth Floor of the Palmer House, to be followed by a reception in the Red Lacquer Room on the Fourth Floor at 5:30 p.m. Following the opening breakfast for everybody, a men's luncheon is set for Monday to hear economist John R. Bunting, Jr., while the ladies are touring the Chicago Art Institute and lunching at the Kungholm.

A half-day program is planned for Tuesday, October 1, with luncheon free and an afternoon tour of the city scheduled.

Wednesday's luncheon is for all convention-goers, to hear a top Illinois official. And in step with tradition, the afternoon annual business meeting will be followed by the President's Reception and the annual banquet, entertainment and adjournment.

The Delaware State Highway Department has been authorized to undertake a study of a north-south, east-west toll highway network across the State.

Rickenbacker Causeway Reforms Subject of Detailed Report

A detailed case history of efforts to clear up operating problems in toll collection at the Rickenbacker Causeway in Dade County, Florida, has been published by the County's Public Works Department.

Barry Sherbal, Causeway administrator, has offered to send a copy to IBTTA members experiencing similar problems. Eight specific operating areas were brought under control within a year. Write him at the Justice Building, 1351 N. W. 12th St., Miami, Fla. 33125.

Bridge Designer Pavlo Featured in Magazine

E. Lionel Pavlo, consulting engineer and associate IBTTA member, was the subject of a cover feature story in Engineering News-Record's issue of August 29.

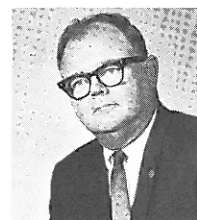
The head of a 200-man firm, Pavlo is currently finishing up a joint contract for the design of the second Delaware Memorial Bridge. His latest is the \$79 million Chester-Bridgeport Bridge across the Delaware River for the Delaware River Port Authority. This structure will have the longest cantilever span in the U. S. and the third longest in the world.

Pavlo also won the contract to design the replacement for the ill-fated Silver Bridge between West Virginia and Ohio. Another bridge project is the new Vicksburg Bridge over the Mississippi. Pavlo was a protege of D. B. Steinman, noted engineer and IBTTA's first president.

Davis to Retire in Texas; Reily to Succeed Him



Davis



Reily

Jack H. Davis, the man who built Texas' two toll roads, will retire as engineer-manager of the Texas Turnpinke Authority at the end of 1969, Authority Board Chairman Clyde R. Ashworth has announced.

Howard M. Reily, 47, assistant chief engineer since 1966, will succeed him. Davis, who joined the Authority in 1954, will continue to serve the Authority on a consulting basis.

Davis was project engineer for the Dallas-Fort Worth Turnpike and has been chief of operations since 1958, also supervising building of the Dallas Northway. He also worked for the City and County of Dallas.

Reily has been with the Authority since 1955 and had broad experience in the construction of both roads. A professional engineer and a graduate of the University of Texas, he is a Navy veteran with service in the Texas Highway Department and with a consulting engineering firm in Dallas.

Host International Stock Goes on N.Y. Exchange

The common stock of Host International, Inc., food merchandisers and IBTTA associate members, has been admitted for trading on the New York Stock Exchange under ticker symbol HII.

The company, which operates restaurants along several U. S. toll roads, and formerly known as Interstate Hosts, Inc., has been serving travelers since 1897, has paid cash dividends annually for 25 years, and now has more than 3,300 shareholders.

Kansas Turnpike's Symes Retires

Don E. Symes, comptroller of the Kansas Turnpike since 1954, retired on July 1 and has been succeeded by Keith Russell, Jr., who has been Symes assistant for 14 years.

Quotable Quotes

"The solution to the transportation problem is not an easy one. For one thing, as William J. Flanagan, executive director of the New Jersey Turnpike Authority, has pointed out, we must look soon to other forms of transportation unless we want our state to turn into a huge concrete parking lot.

"Perhaps the solution lies in a combination of mass transit facilities together with the establishment of an independent toll authority which would turn our presently "free" interstate and intrastate thoroughfares into toll roads, thus relieving both the state of finding more and more money to fund the programs, and the taxpayers, turning the 'tax' into a selective tax on only those who use the roads."

—An editorial in the Daily Home News,
New Brunswick, New Jersey, Aug. 28, 1968.

More Toll Booths Open On Atlantic Beach Bridge

As a service to harried New York commuters now driving cars to work as a result of Long Island Railroad service cutbacks, the Nassau County Bridge Authority has opened all seven toll booths each morning for traffic.

Bridge Authority executive Henry A. Rigali said the practice has been to open all booths only at evening rush hour.

Florida's Turnpike to Get Median Barrier System

The Florida State Turnpike Authority will spend nearly \$1.5 million for a 30-mile installation of a median barrier system on Florida's Turnpike between Miami and Boca Raton, following an August board meeting of the Authority.

Captain William R. Kaufman, Turnpike Safety Director, said the installation will eliminate the cross median accidents occurring recently. No decision was reached on type of metal to be used, but a strong rail, weak post system will be installed.

Boege Joins Holiday House

Frank W. Boege, former executive director of the Illinois Tollway, and former member of the IBTTA board, has joined the staff of one of IBTTA's associate members, Holiday House. Boege has been named promotional director for their North Central region.

HRB Issues Guardrail Study

Highway design and maintenance engineers will be interested in National Cooperative Highway Research Report 54, on "Location, Selection and Maintenance of Highway Guardrails and Median Barriers," published recently by the Highway Research Board.

The report contains a compilation of recommended practices and the current state of the art in this field. It was prepared by J. D. Michie and L. R. Calcote, of Southwest Research Institute, San Antonio, Texas. Price of the 64-page study is \$2.60 from HRB, National Academy of Science, 2101 Constitution Ave., Washington, D. C., 20418.

Barnes Wins Matson Award

Henry A. Barnes, Commissioner, Dept. of Traffic in New York City, has received the Theodore M. Matson Memorial Award for 1968 for his contributions to traffic engineering.

Barnes, well-known for his innovations in applying electric and electronic devices to solve traffic congestion problems, was presented the award at the Institute of Traffic Engineers meeting in Philadelphia last month.

The Pennsylvania State Senate has adopted a resolution appointing a committee to check the feasibility of State purchase of unused street and utility roadbeds and rights of way and utilizing them as toll roads and service structures for trucks. The Pennsylvania Turnpike was built on the right of way of an abandoned railroad.

DOT Publishes Safety Handbook

A new "Handbook of Highway Safety Design and Operating Practices" has been published by the U. S. Department of Transportation. In loose-leaf form as a continuing document, it presents latest safety design methods. Cost is 40¢ from Superintendent of Documents, Government Printing Office, Washington, D. C. 20402.

